

# KEY PRODUCTS

## END STOP RM 8811



24V

48V

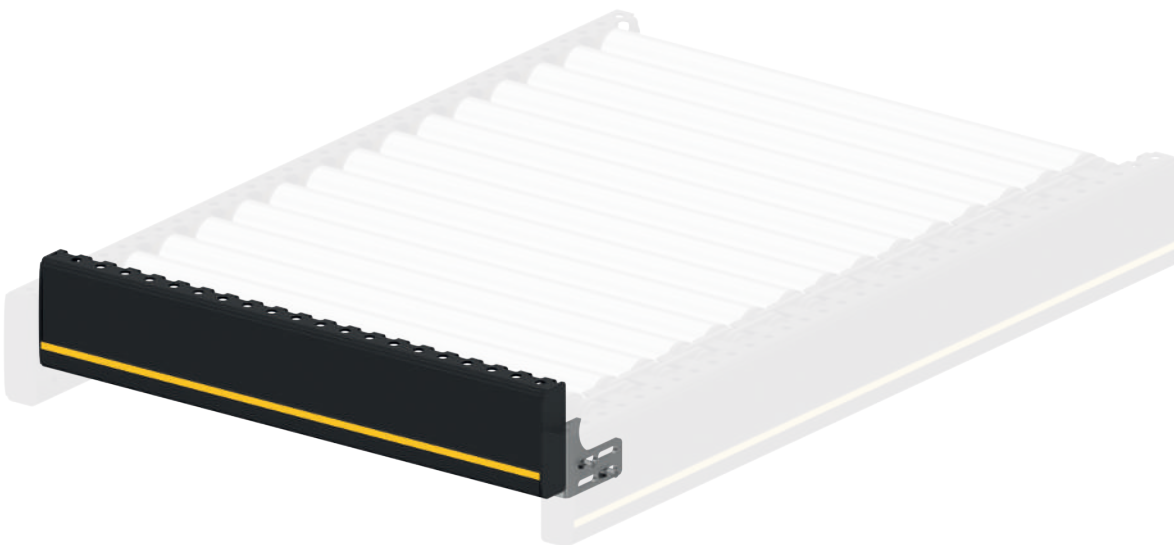
400V

### Product description

The end stop is a permanently mounted attachment, for stopping and accumulating of approaching material. The end stop is used at the end of sloped or friction roller conveyors, or as a secure termination of all other conveyor lines.

### Scope of delivery

- End stop, incl. fastening material

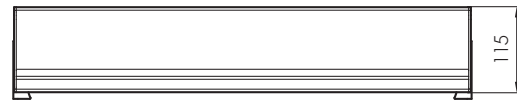
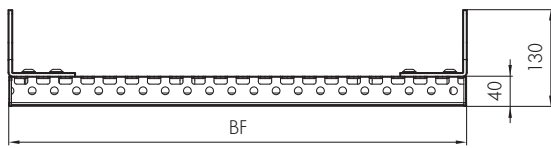


## Technical data

### General technical data

Maximum accumulation pressure 300 N

## Dimensions



BF	Rated width	420, 620, 840 mm (others on request)
----	-------------	--------------------------------------