

BELT CONVEYORS

BM 4430/4445

Belt merge



24V

48V

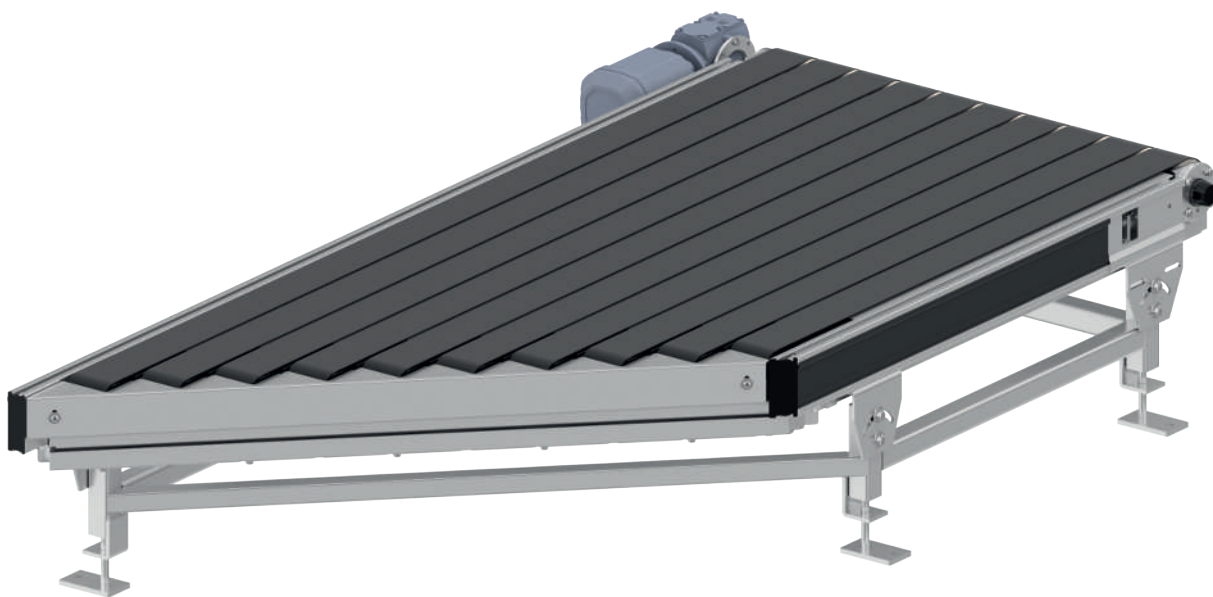
400V

Product description

The belt merge is a belt conveyor with a 30° or 45° angled connecting edge. This conveyor element enables the merging of two conveyor lines at the corresponding angle. With the use of supplementary sorting elements, belt merges also enable the separation of conveyor flows. The conveying belts are available in widths of 90 mm and 40 mm for especially small materials. The belt merge has an especially low overall height at 270 mm.

Scope of delivery

- The module is fully assembled
- Please order support stands, side guides and sensors separately



Technical data

General technical data	
Max. load capacity*	50 kg/m
Max. load capacity per module*	100 kg
Conveyor speed*	0.1 to 2.0 m/s
Incline/decline	Not suitable
Ambient temperature	-5 to +40 °C
Drive	
Rated voltage	400 V/50 Hz/3 phases
Electrical power	0.37 to 1.10 kW
Motor type	Geared motor 0.37 kW to 1.10kW
Diameter of drive roller	92/120 mm
Diameter of idler pulley, straight side	92/120 mm
Diameter of idler pulley, angled side	70 mm
Materials	
Conveyor belt	Structured surface Flame resistant in compliance with DIN EN 20340 (optional) Other surfaces on request Belt width 90 or 40 mm
Slider bed	Polymer slide profiles

*The combination of maximum values is not always possible.

BELT CONVEYORS

BM 4430/4445

Belt merge

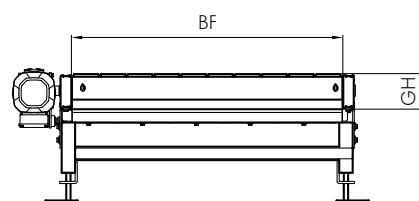
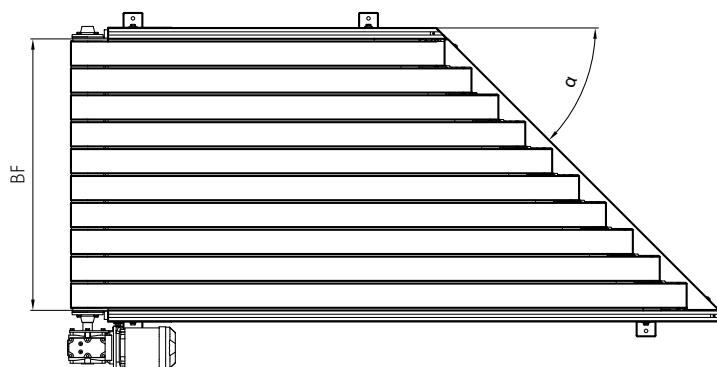


24V

48V

400V

Dimensions



α	Angle	30°/45°
BF	Rated width	420, 620, 840, 1020 mm others on request
GH	Overall height	270 mm
	Medium length	See application notes, page 127