

BELT CONVEYORS

BM 1110 / BM 1111

Driven

24V

48V

400V

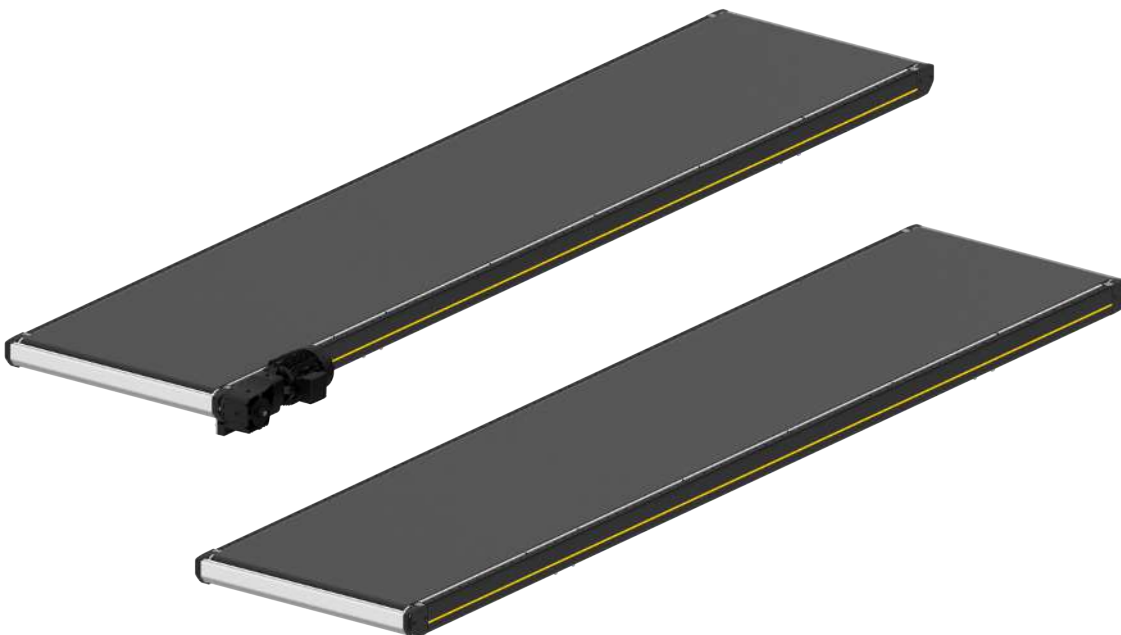
Product description

The belt conveyor is characterized by robustness, speed, and a flat design. It is suitable for transporting all types of goods, such as cardboard boxes, parcels, plastic containers and polybags. New transition profiles prevent the goods from getting stuck at the transitions.

The belt conveyor is available with a gear motor (BM 1110) or drum motor (BM 1111).

Scope of delivery

- Module is completely assembled, maybe split into sections
- Please order supports and other accessories separately



Technical data

General technical data	
Max. load capacity	50 kg/m
Max. load capacity per module	550 kg
Conveyor speed	0.3 to 2.5 m/s
Incline/decline	Max. 3°
Ambient temperature	+5 to +40 °C
Drive	
Rated voltage	400 V
Electrical power	Max. 1.1 kW (drum motor), max. 3 kW (gear motor)
Motor type	Drum motor/gear motor
Materials	
Conveyor belt	Smooth, 2-layer, PVC
Slider bed	Zinc-plated sheet steel 3 mm

Combination of the maximum values is not always possible.

Dimensions

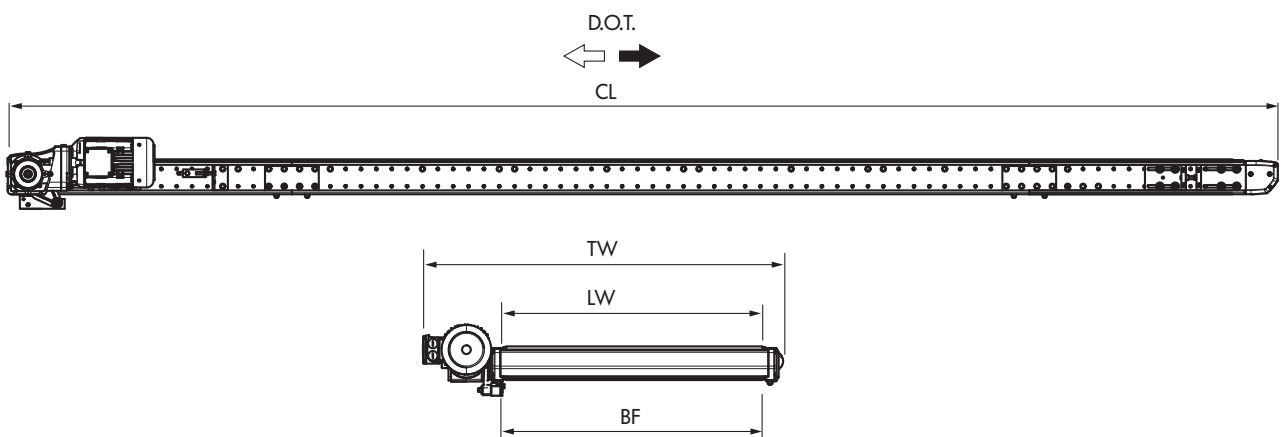


Fig.: Dimensional drawing with gear motor

BF	Rated width	620, 840, 1025, 1225 mm
LW	Clear width	BF
CL	Module length	1200 – 12000 mm
TW	Module width	BF + 375 mm (gear motor), BF + 100 mm (drum motor)
	Side guide height	150, 300, 600 mm